

Philadelphia Association Of Community Development Corporations (PACDC) and Thomas Jefferson University and Hospital

James Plumb MD, MPH

Rickie Brawer PhD, MPH, MCHES

Center for Urban Health – Thomas Jefferson University Hospital

Rick Sauer - Executive Director of the *Philadelphia*
Association of Community Development Corporations.





Thomas Jefferson University, located in Philadelphia, is dedicated to the health sciences and community health via education, research, and health services to improve the health of the populations served.



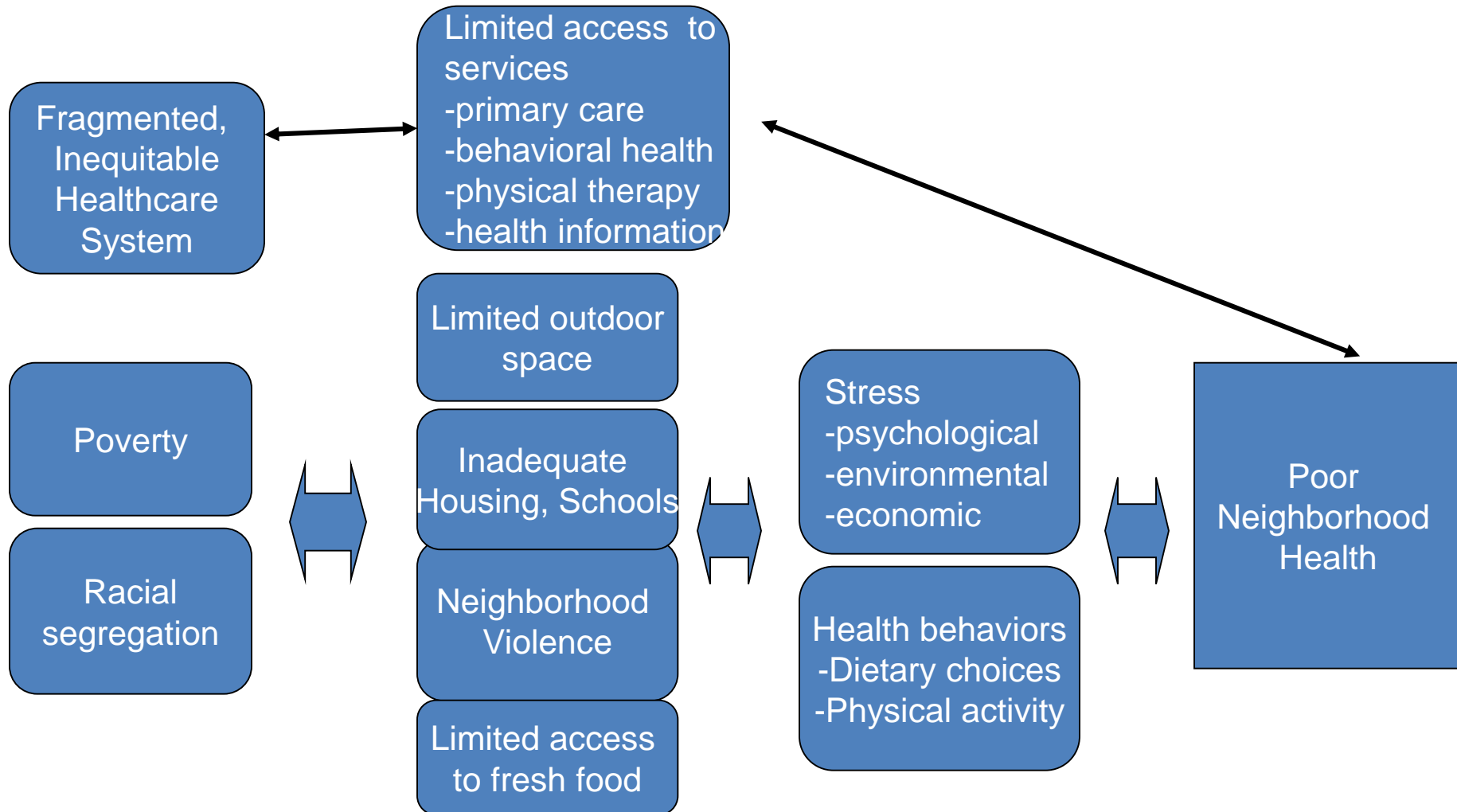
Life Expectancy Within Philadelphia

<http://www.philly.com/philly/infographics/375352961.html>



Barriers to Health

(Schulz, Kannon 2005; Schulz, Zenk 2005)



Jefferson's Linkages To PACDC

- Perform physicals on children in day-care centers to assure compliance with Federal and State regulations
- Implement primary care partnerships in neighborhood Federally Qualified Health Centers
- Assist in financing the development of FQHCs
- Integrate chronic disease prevention and management in a Workforce Development Program
- Collaboratively write grant proposals
- Collaboration on Regional conference to increase CDC awareness of the CHNA process
- Develop a family centered obesity prevention program for families and children in Head Start programs

Health Services @ Project H.O.M.E.



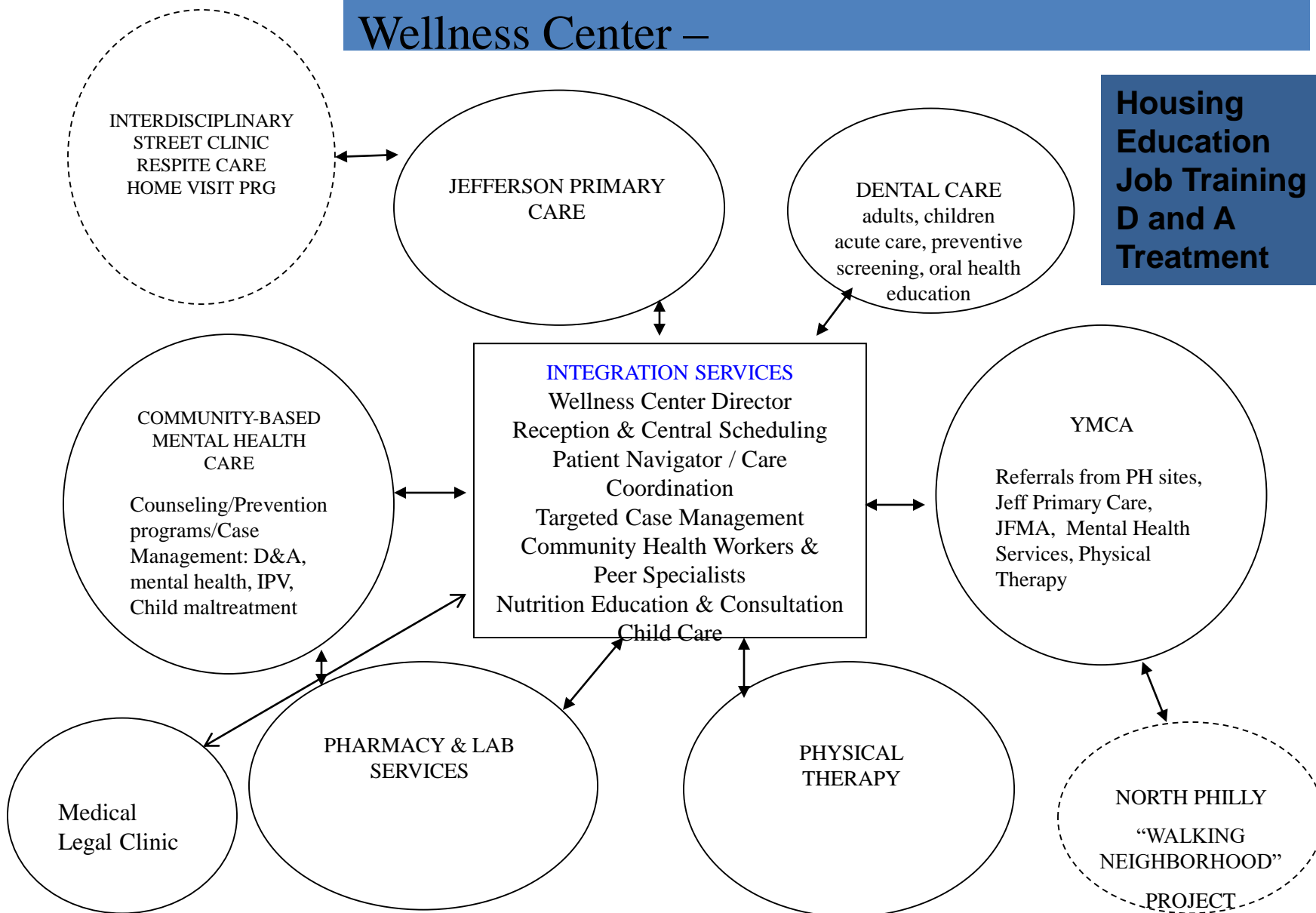
1845 N. 23rd



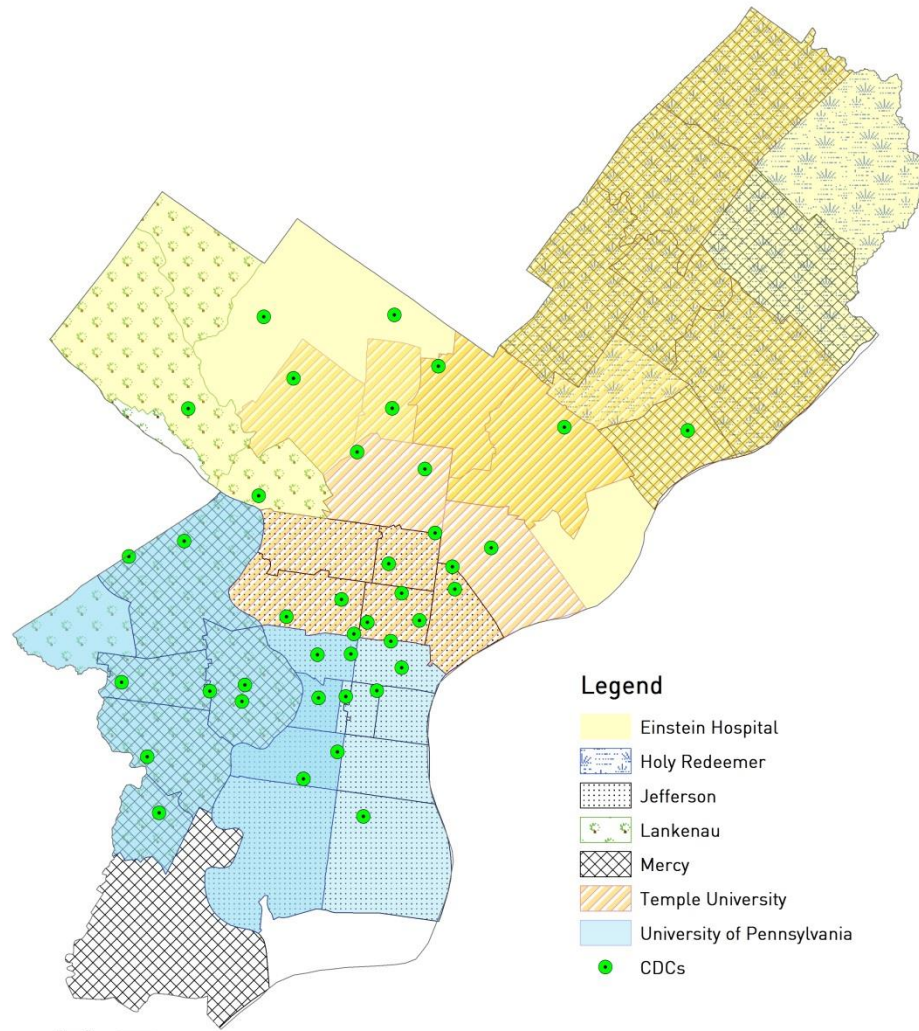
22nd and Cecil B Moore

Wellness Center –

**Housing
Education
Job Training
D and A
Treatment**



Philadelphia Nonprofit Hospital Boundaries & PACDC Member Locations



Legend

- Einstein Hospital
- Holy Redeemer
- Jefferson
- Lankenau
- Mercy
- Temple University
- University of Pennsylvania
- CDCs