



THE DOCTOR IS OUT: HEALTH HAPPENS WHERE YOU LIVE, LEARN, WORK AND PLAY



**Build Healthy
Places Network**

Douglas Jutte, MD, MPH

NACEDA
August 30, 2016



**DEFINING
HEALTH**

Health

≠

**Health
Care**

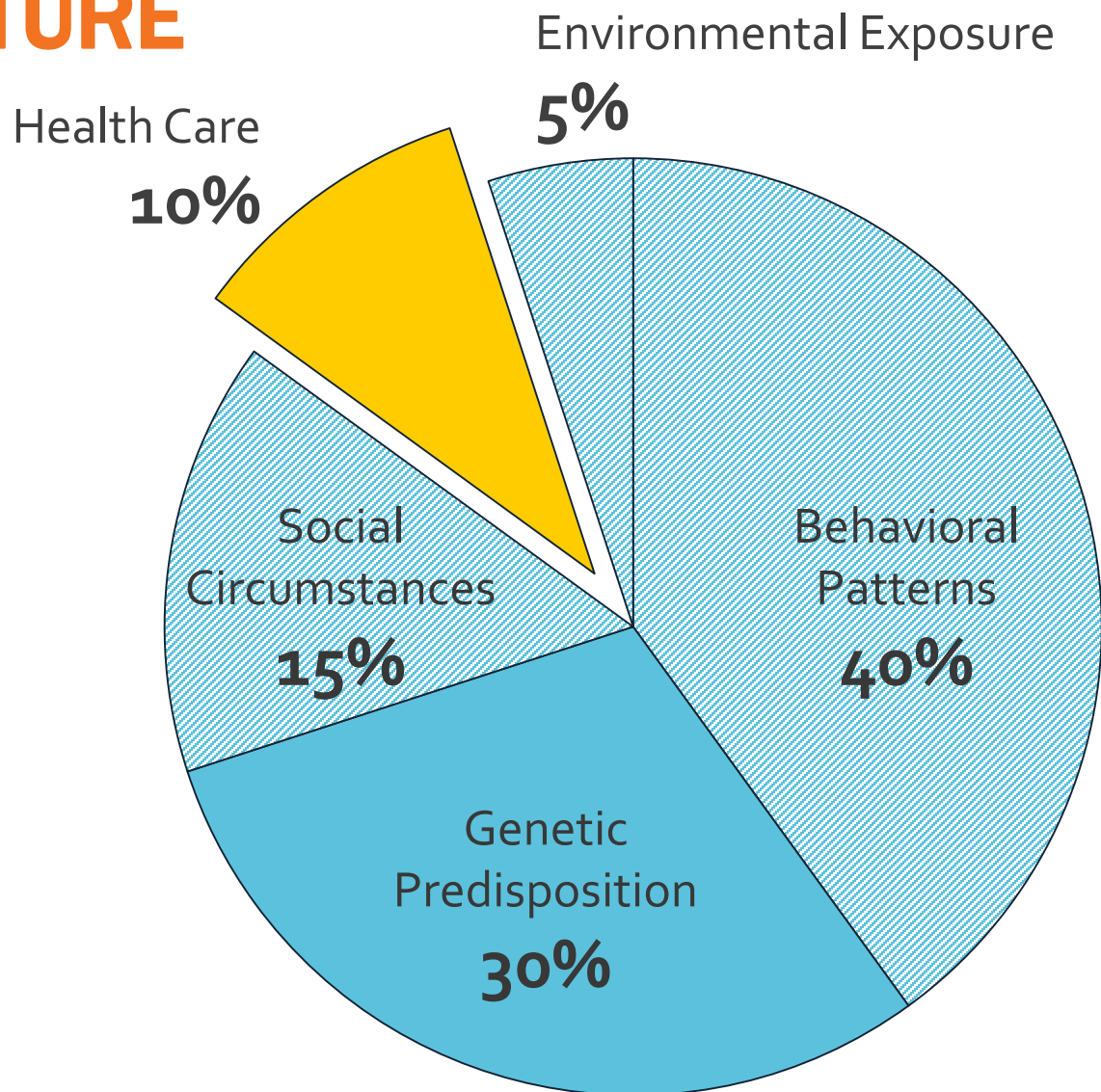
**DEFINING
HEALTH**

Health

≠

**Health
Care = Medical
Care**

CONTRIBUTIONS TO PREMATURE DEATH



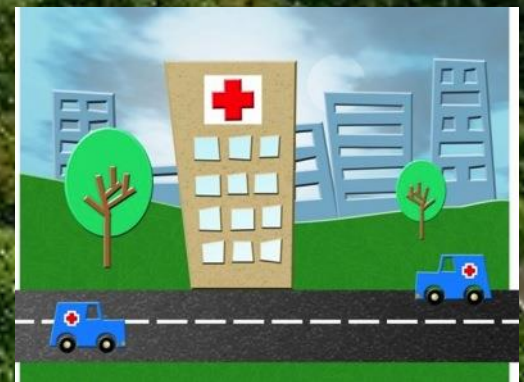
CURRENT HEALTHCARE EXPENDITURES?

\$3 TRILLION/yr

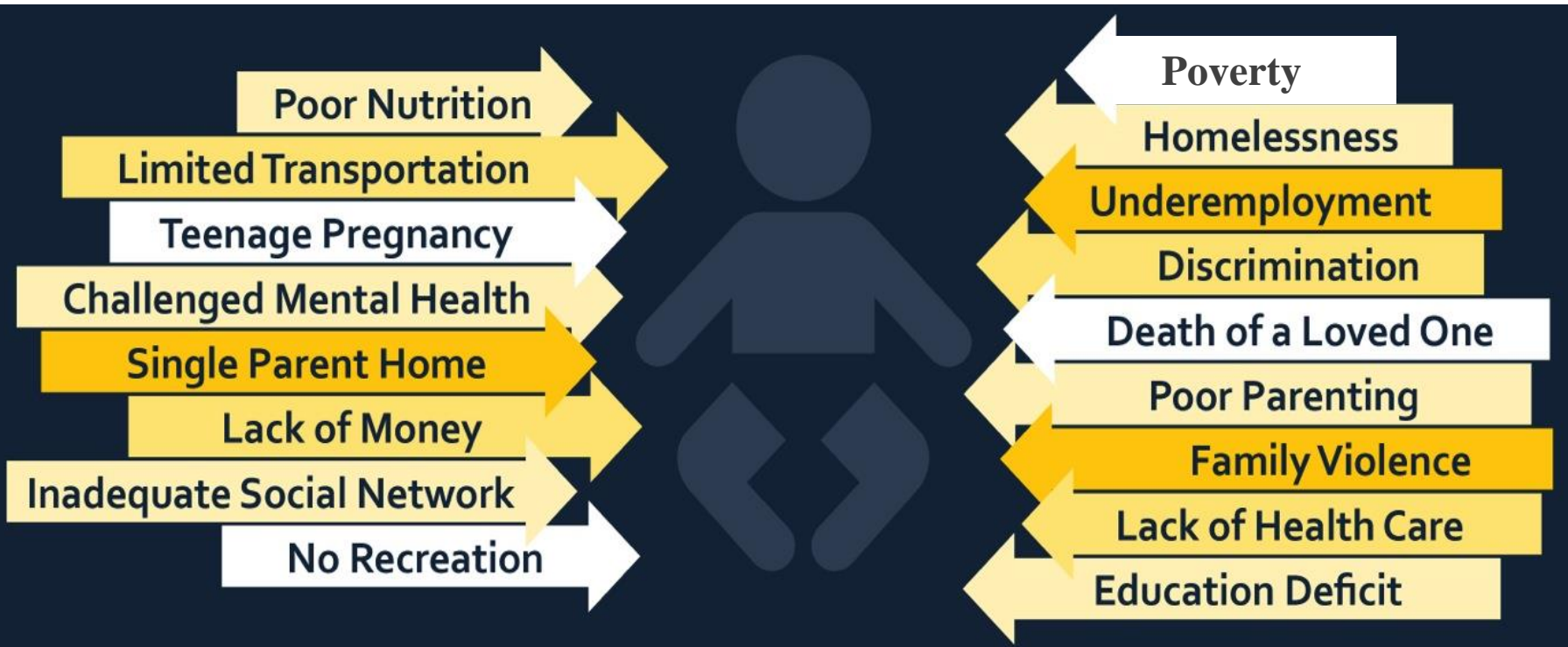
DEFINING HEALTH

Preamble to the Constitution of the World Health Organization
1946

**“Health is a state of
complete physical, mental
and social well-being
and not merely the absence
of disease or infirmity”**



SOCIAL DETERMINANTS OF HEALTH

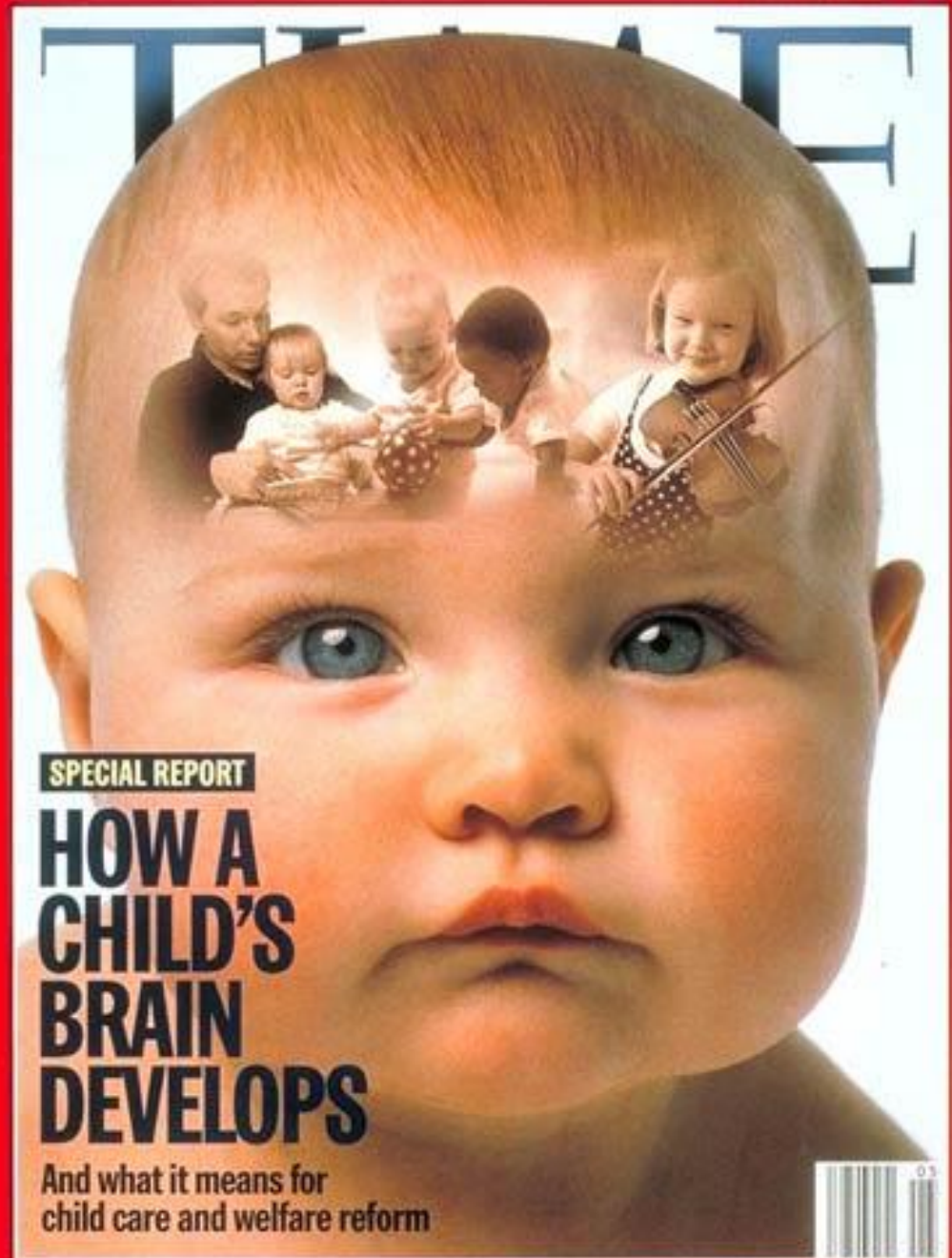


Source: www.smartcitymemphis.com/cartoon/toxic

LACK OF CONTROL → TOXIC STRESS

IMPACTS OF TOXIC STRESS :

- IMMUNE SYSTEM
- FIGHT OR FLIGHT RESPONSE
- BRAIN DEVELOPMENT

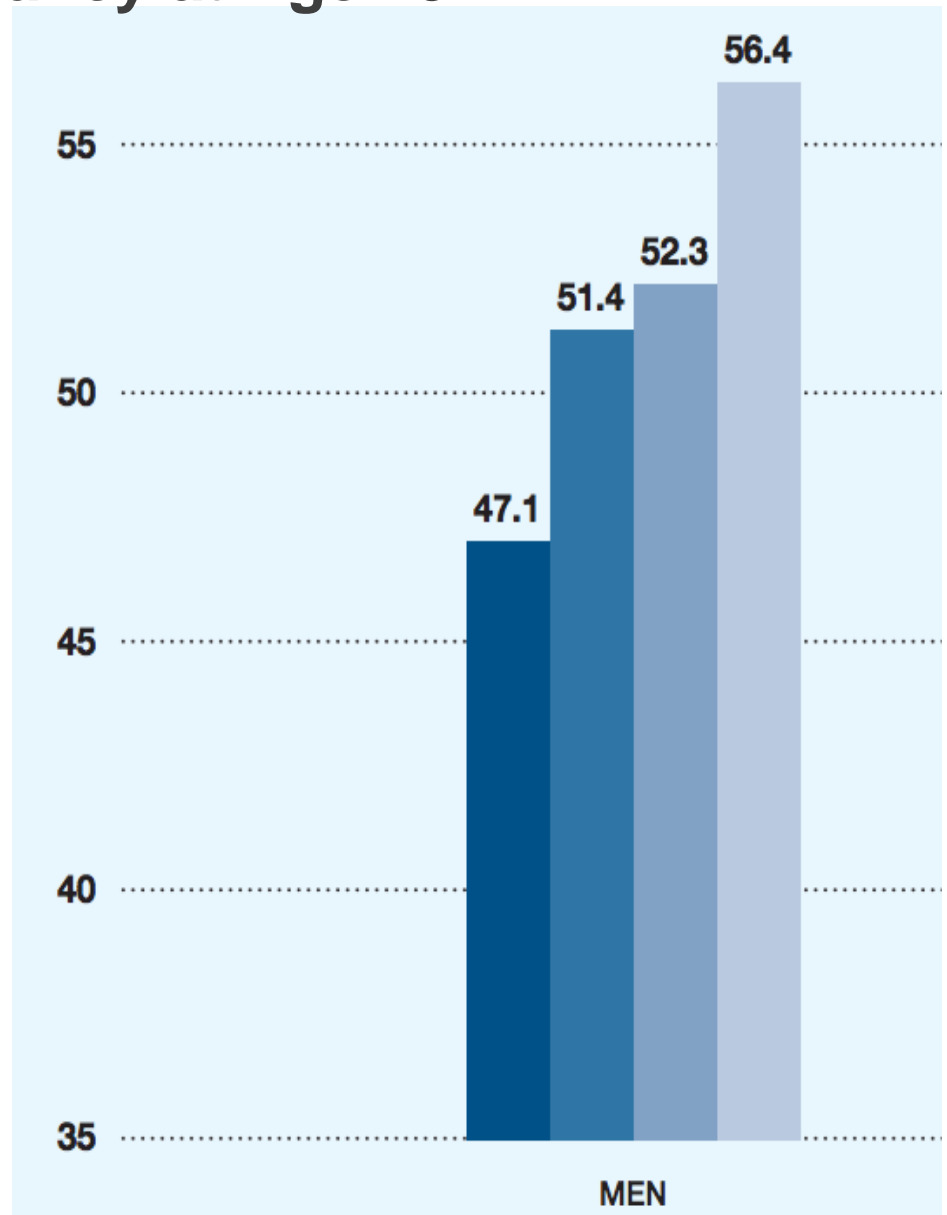


HEALTH = EDUCATION

Life Expectancy at Age 25

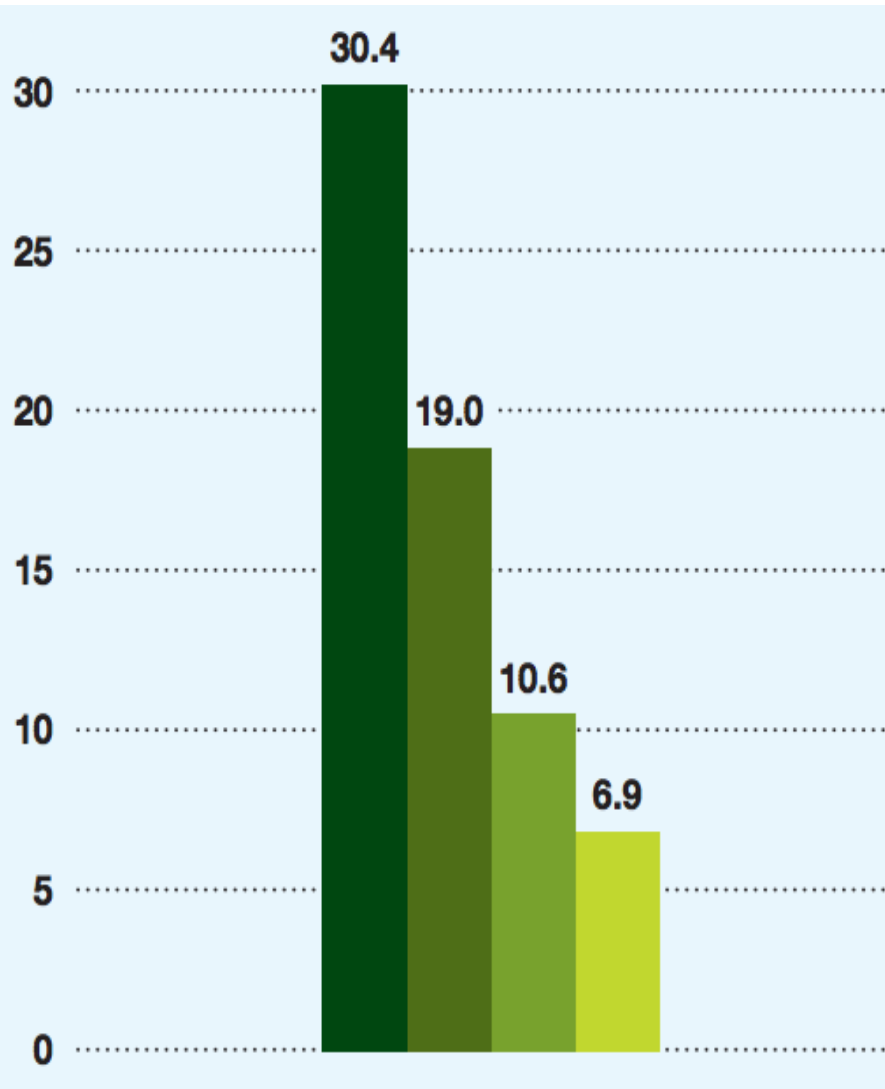
Educational Attainment

- Less than high school
- High-school graduate
- Some college
- College graduate



HEALTH = INCOME

Percent of Children with Less than Very Good Health



Family Income
(Percent of Federal Poverty Level)

- <100%
- 100–199%
- 200–399%
- ≥ 400%

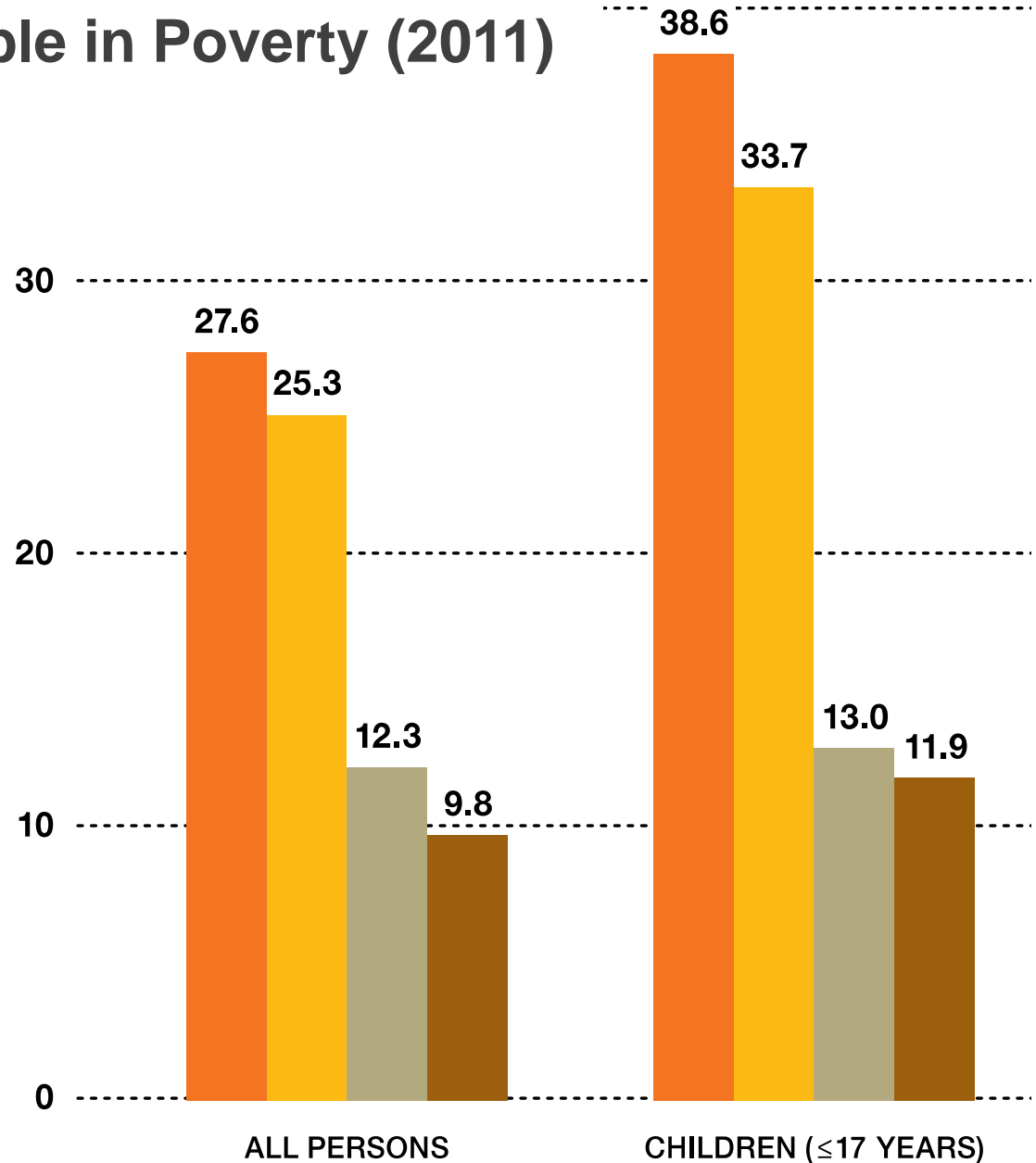
ACROSS ALL RACIAL/ETHNIC GROUPS

Percent of People with Poor Health by Income



...BUT POVERTY IS CONCENTRATED

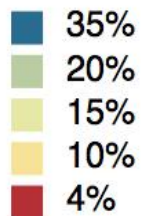
Percent of People in Poverty (2011)



IN CLIMBING THE INCOME LADDER, LOCATION MATTERS

RAJ CHETTY, STANFORD ECONOMIST

The chance a child
raised in the bottom
fifth
rose to the
top fifth



S.F.: 11.2%

Salt Lake City: 11.5%

Chicago: 6.1%

Boston: 9.8%

New York: 9.7%

L.A.: 9.6%

Charlotte: 4.3%

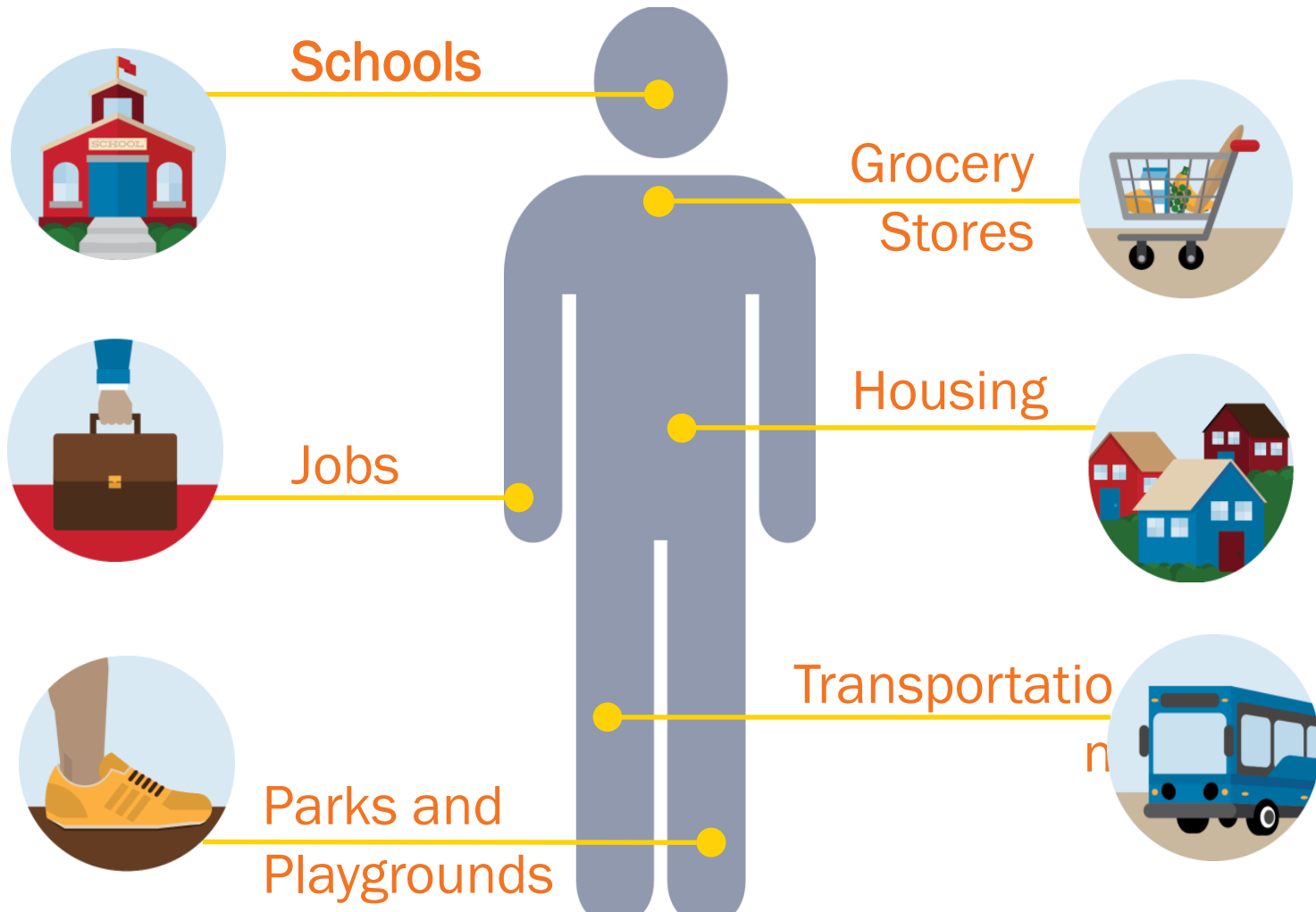
Atlanta: 4.0%

Houston: 8.4%

The top fifth is
equal to family income
of more than \$70,000
for the child by age 30,
or more than \$100,000
by age 45.

In areas like Atlanta,
upward mobility appears
to be substantially lower
than in any other rich
country.

PEOPLE GET SICK BECAUSE OF THEIR SOCIAL AND PHYSICAL ENVIRONMENTS



HEALTH DISPARITIES

SHORT
DISTANCES:
LARGE
DIFFERENCES

WASHINGTON, DC



HEALTH DISPARITIES

SHORT
DISTANCES:
LARGE
DIFFERENCES

NEW ORLEANS

RWJF Commission
to Build a Healthier America

Robert Wood Johnson Foundation



HEALTH DISPARITIES

SHORT DISTANCES: LARGE DIFFERENCES

MINNEAPOLIS – ST PAUL

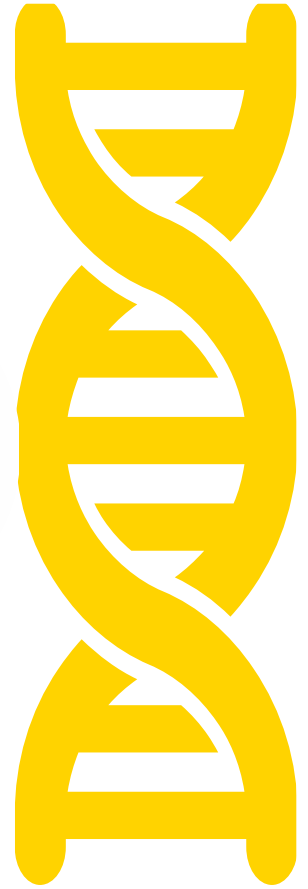
RWJF Commission
to Build a Healthier America

Robert Wood Johnson Foundation



**IN DETERMINING
YOUR HEALTH...**

44115 >

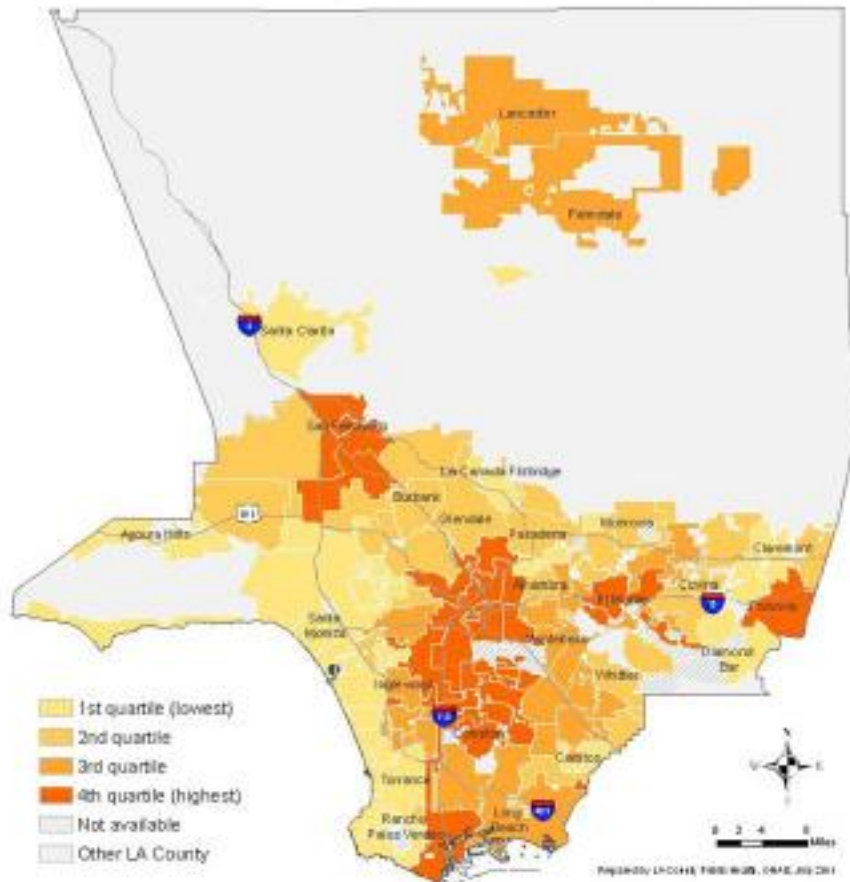


COMMUNITY DEVELOPMENT IS IN THE ZIP CODE IMPROVEMENT BUSINESS

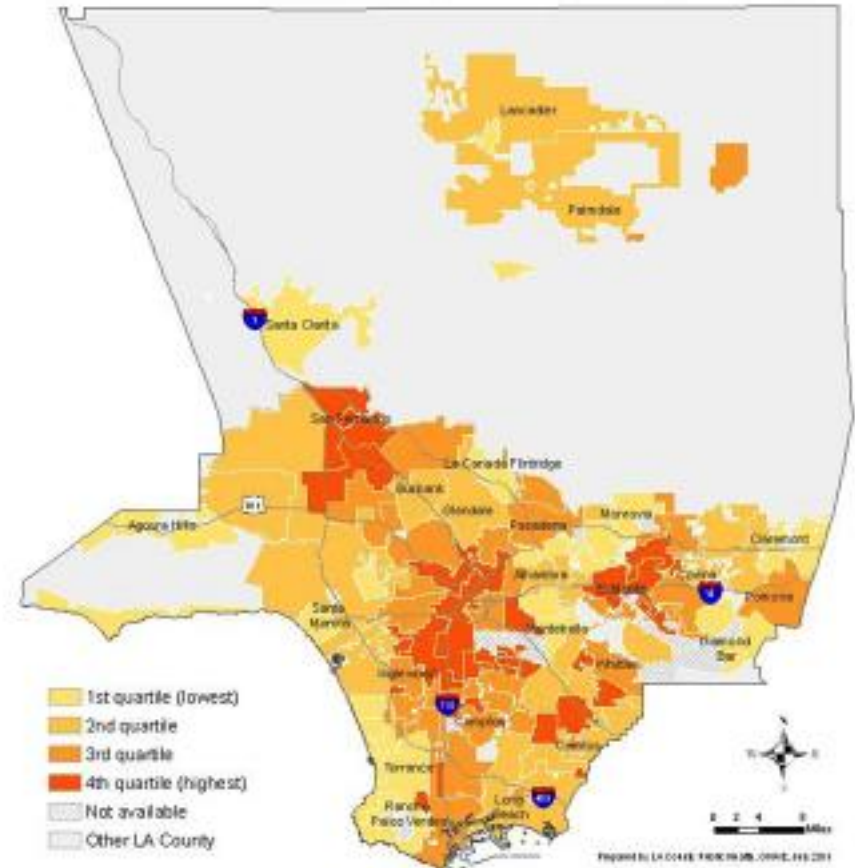


COMMUNITY DEVELOPMENT & HEALTH WORK SIDE-BY-SIDE

Economic Hardship by City



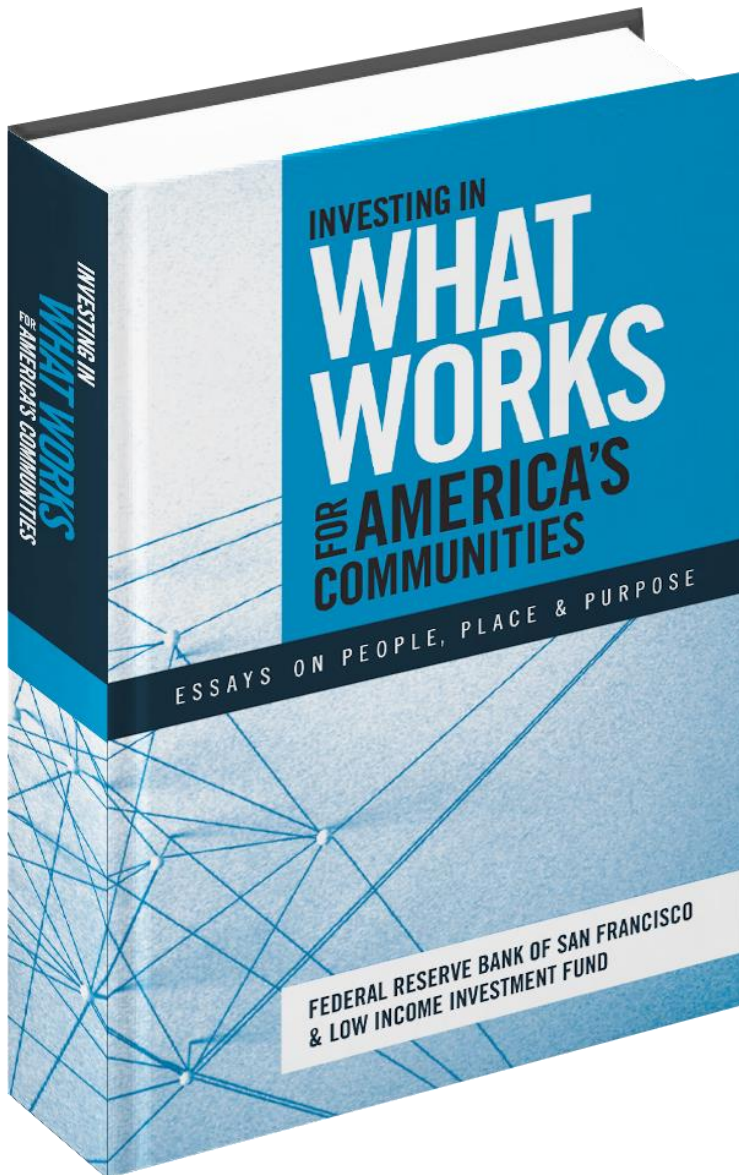
Childhood Obesity by City



Los Angeles County

WHATWORKSFORAMERICA.ORG

**Federal Reserve Bank
of San Francisco &
Low Income Investment
Fund (LIIF)**



ZIP CODE IMPROVEMENT... NEIGHBORHOOD-LEVEL



PURPOSE
BUILT
COMMUNITIES

East Lake Meadows
Atlanta, Georgia



COMMUNITY QUARTERBACK



VILLAGES OF EAST LAKE ATLANTA, GEORGIA



PURPOSE
BUILT
COMMUNITIES



VILLAGES OF EAST LAKE ATLANTA, GEORGIA



PURPOSE
BUILT
COMMUNITIES



VILLAGES OF EAST LAKE ATLANTA, GEORGIA



PURPOSE
BUILT
COMMUNITIES



STAMFORD, CT

Vita
CARE. GROW. ASPIRE.

FAIRGATE FARM
Growing a Local Food System



CONWAY CENTER WASHINGTON, DC



HealthyFutures



RESOURCES FOR THE NEXT STEPS



BuildHealthyPlaces.org

By joining forces, community developers and health professionals can have a more powerful impact.

Learn More About the Network



Build Healthy
Places Network
#NetworkCommons



The Pulse

A monthly roundup of what we're reading and where we've been at the intersection of community development and health.

View Past Issues

Sign Up

JANUARY

What we're not hearing enough about on the campaign trail

DECEMBER

Have a healthy, happy holiday

OCTOBER

Health is more than health care



Making the Case for Linking Community Development and Health



Build Healthy
Places Network

Community Close Up: Columbia Parc at the Bayou District-New Orleans, LA





Crosswalk



Whose City Is it? The Promise and Peril of Gentrification



What to Make of Social Impact Bonds



A Financial Remedy on the Reservation



A New Generation of Affordable Housing

MeasureUp



Welcome to MeasureUp, a microsite of resources and tools to help you measure and describe your programs' impact on families and communities and on factors related to health. MeasureUp provides examples, tools, and resources to help you make your case, without having to become an economist.

Here's what's available:



Mapping Tools



Measurement Tools



Evidence Base



Measurement Stories

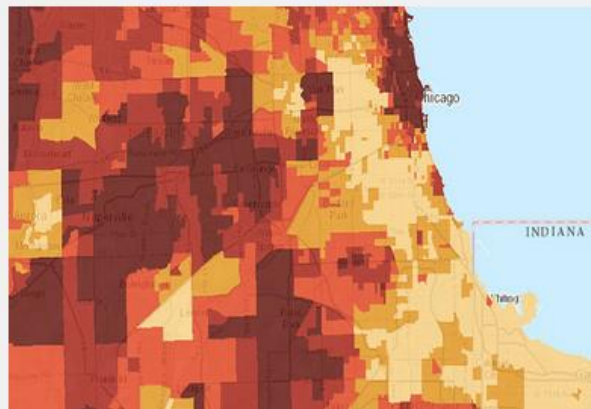


Deeper Dive

Featured Resources



Metrics for Healthy Communities



Mapping Child Opportunity



How Developers Can Build Healthier Places

TAKE AWAYS: CONNECTING HEALTH & COMMUNITY DEVELOPMENT

Healthcare is not health → Health happens in neighborhoods

Urgent need to address root causes of poor health and high medical care costs

Greatest impact through aligned investments addressing multiple social determinants

New partners in public health and healthcare → Help in measuring & financing ROI in health and social determinants



Build Healthy
Places Network

BuildHealthyPlaces.org